

Project:	
Type:	
Catalog #:	



### FEATURES

The HOL Series High Mast is an LED solution for expressway, free way interchanges and other large area applications. Unique reflective optics is designed to optimize application efficiency and minimize glare. The luminaires' is an efficient solution lowering energy consumption as compared to transitional HID fixtures providing additional operating cost savings.

- Smart lighting system
- Lid-latch driver box design
- Less energy consumption
- Easy installation & maintenance

### FINISH

- Rugged, weather-tight design and 3G Vibration ratings
- Corrosion resistant polyester powder painted

### APPLICATIONS

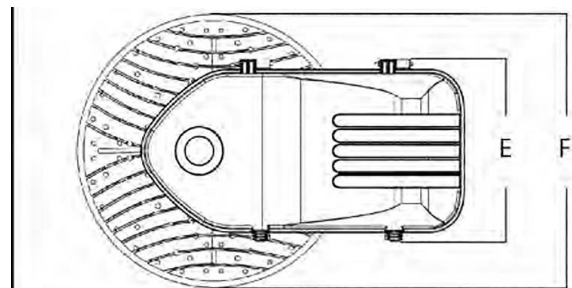
- Expressway and Freeway Inter changes;
- Port Facilities;
- Trailer/Container Yard and Rail Yard Operations.

### OPTICS/ELECTRICAL

- Multiple light distributions to maximize performance: 15D,30D,60D, T2M,T3M,T4M, T5.
- -40° C to 50° C (-40°F to 122°F) average operating temp range.
- 1-10V dimming driver device standard.
- 100-277Vac operation, 50/60HZ standard, 347V/480V 50/60Hz optional.

### LED

- HOL light engine uses reflective technology to optimize application efficiency and minimize glare. Utilizes high brightness LEDs.
- LM-79 test and report in accordance with IESNA standard
- HOL1 : 3000K - 6500K CCT
- HOL2 / HOL3 : 2700K - 6500K CCT
- Minimum CRI of 70, 80, and 90 optional.



	A	B	C		
230W	66.4cm/26.0'	55.5cm/21.7'	14.9cm/5.8'		
315W					
380W	D (INM)	D (INM02)	E		F
	22.4cm/8.8'	21.4cm/8.4'	31.4cm/12.3'		46.8cm/18.3'
460W	A	B	C		
580W	70.5cm/27.6'	55.5cm/21.7'	14.9cm/5.8'		
720W	D (INM)	D (INM02)	E		F
	21.8cm/8.5'	21.1cm/8.3'	31.4cm/12.3'		46.8cm/18.3'

### ORDERING INFORMATION:

MODEL	WATTAGE	TYPE	VOLTAGE	LED CHIPS	SENSORS	CCT & CRI	DISTRIBUTION	MOUNTING	HOUSING
HOL	23 = 230W 31 = 315W 38 = 380W 46 = 460W 58 = 580W 72 = 720W	1* 2** 3***	LV = 120-277V HV = 347-480V	LS = Lumileds 5050 Y22 = Seoul Y22	ND = Non Dimmable DM = Dimmable 5P = 5-Pin Photocell 7P = 7-Pin Photocell R = Internal Receptacle with shorting cap	3070 = 3000K / 70 CRI 4070 = 4000K / 70 CRI 5070 = 5000K / 70 CRI 5770 = 5700K / 70 CRI 6570 = 6500K / 70 CRI 3080 = 3000K / 80 CRI 4080 = 4000K / 80 CRI 5080 = 5000K / 80 CRI 5780 = 5700K / 80 CRI 6580 = 6500K / 80 CRI	15 = 15° 30 = 30° 60 = 60° T2M = Type II Medium T3M = Type III Medium T4M = Type IV Medium T5 = Type V	SF = Slipfitter	BK = Black SG = Silver Gray

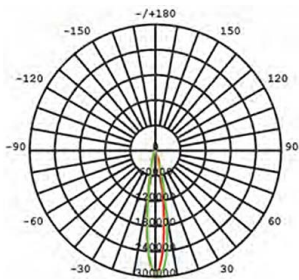
\*Type 1 = COB LED with glass lens. Only available with distribution types T2M/T3M/T4M/T5  
 \*\*Type 2 = LED Board with glass lens. Only available with distribution types T2M/T3M/T4M/T5  
 \*\*\*Type 3 = LED Board with PC Lens. Only available with distribution types 15/30/60

MODEL	TYPE	WATTS	OPTICS	LUMEN OUPUT	EFFICACY	REPLACE MHL	IP&IK	FIXTURE DIMENSION	NW	PACKAGE DIMENSION	GW
HOL-23	1	230W	T2M/T3M/T4M/T5	33350lm	145lm/W	850W	IP66 & IK08	26x18.3x8.8in (66.4x46.8x22.4cm)	40.8lb (18.5kg)	28.9x21.25x11.81in (73.5x54x30cm)	44.1lb (20kg)
	2		T2M/T3M/T4M/T5	35420lm	154lm/W		IP66 & IK08		40.8lb (18.5kg)		44.1lb (20kg)
	3		15°/30°/60°	38410lm	167lm/W		IP66 & IK10		40.8lb (18.5kg)		44.1lb (20kg)
HOL-31	1	315W	T2M/T3M/T4M/T5	43470lm	138lm/W	1000W	IP66 & IK08	26x18.3x8.8in (66.4x46.8x22.4cm)	40.8lb (18.5kg)	28.9x21.25x11.81in (73.5x54x30cm)	44.1lb (20kg)
	2		T2M/T3M/T4M/T5	47250lm	150lm/W		IP66 & IK08		45lb (20.5kg)		50.7lb (23kg)
	3		15°/30°/60°	52605lm	167lm/W		IP66 & IK10		45lb (20.5kg)		50.7lb (23kg)
HOL-38	1	380W	T2M/T3M/T4M/T5	51300lm	135lm/W	1150W	IP66 & IK08	26x18.3x8.8in (66.4x46.8x22.4cm)	40.8lb (18.5kg)	28.9x21.25x11.81in (73.5x54x30cm)	44.1lb (20kg)
	2		T2M/T3M/T4M/T5	55860lm	147lm/W		IP66 & IK08		45lb (20.5kg)		52.9lb (24kg)
	3		15°/30°/60°	59660lm	157lm/W		IP66 & IK10		45lb (20.5kg)		52.9lb (24kg)
HOL-46	1	460W	T2M/T3M/T4M/T5	65780lm	143lm/W	1200W	IP66 & IK08	27.6x21.6x8.5in (70.5x55x21.8cm)	45lb (20.5kg)	30.5x24.4x11.81in (77.5x62x30cm)	48.5lb (22kg)
	2		T2M/T3M/T4M/T5	71300lm	155lm/W		IP66 & IK08		50.7lb (23kg)		57.3lb (26kg)
	3		15°/30°/60°	77280lm	168lm/W		IP66 & IK10		50.7lb (23kg)		57.3lb (26kg)
HOL-58	1	580W	T2M/T3M/T4M/T5	80040lm	138lm/W	1500W	IP66 & IK08	27.6x21.6x8.5in (70.5x55x21.8cm)	45lb (20.5kg)	30.5x24.4x11.81in (77.5x62x30cm)	48.5lb (22kg)
	2		T2M/T3M/T4M/T5	87000lm	150lm/W		IP66 & IK08		52.9lb (24kg)		59.5lb (27kg)
	3		15°/30°/60°	92220lm	159lm/W		IP66 & IK10		52.9lb (24kg)		59.5lb (27kg)
HOL-72	1	720W	T2M/T3M/T4M/T5	95040lm	132lm/W	2000W	IP66 & IK08	27.6x21.6x8.5in (70.5x55x21.8cm)	45lb (20.5kg)	30.5x24.4x11.81in (77.5x62x30cm)	48.5lb (22kg)
	2		T2M/T3M/T4M/T5	104400lm	145lm/W		IP66 & IK08		52.9lb (24kg)		59.5lb (27kg)
	3		15°/30°/60°	112320lm	156lm/W		IP66 & IK10		52.9lb (24kg)		59.5lb (27kg)

## PHOTOMETRICS

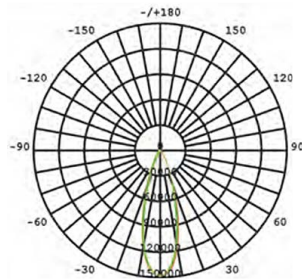
### HOL1

15D



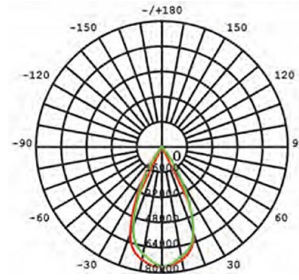
AVERAGE BEAM  
ANGLE (50%): 16.6°

30D



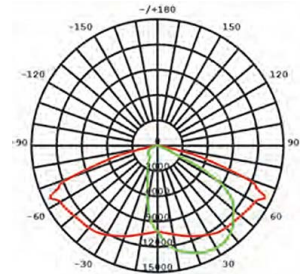
AVERAGE BEAM  
ANGLE (50%): 30.5°

60D



AVERAGE BEAM  
ANGLE (50%): 51.6°

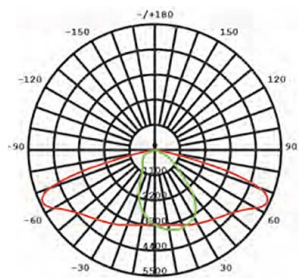
BM



AVERAGE BEAM  
ANGLE (50%): 110.9°

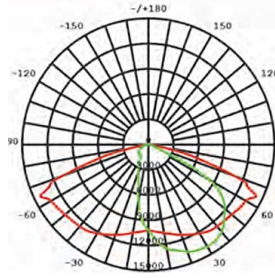
### HOL2

T25



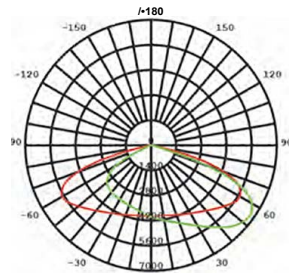
AVERAGE BEAM  
ANGLE (50%): 110.1°

BM



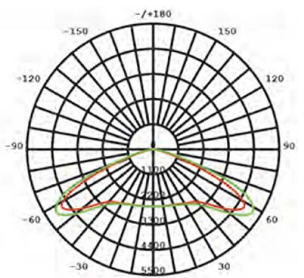
AVERAGE BEAM  
ANGLE (50%): 110.9°

T4M



AVERAGE BEAM  
ANGLE (50%): 131.5°

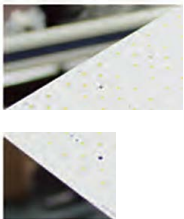
TSM



AVERAGE BEAM  
ANGLE (50%): 144.5°



- PMMA adopts matrix full light cutting design. By adding a concave light retaining wall, excess light can be removed and the effect of receiving & blocking can be achieved. The design scheme can meet users' requirements for light seeing range to a greater extent.
- The overall streamline of the lamp body is beautiful, generous and decent. The back adopts fin type heat dissipation structure, with better heat dissipation effect. Edge sinking design and convection vents, optimize air convection quality, strengthen heat dissipation, fully ensure the life of the lamp.
- Multiple methods of installation and power supply placement to meet different requirements. External or internal power supply.
- Induction mounting hole is reserved. Offer customers more functional options and more convenient for upgrading in the future.
- IP66 protection grade, waterproof structure design + high resistance wire sili-cone waterproof ring design, double protection, safer. Better protection of the lamp IP performance.
- Super bracket design, bracket strength can support more than 10 times the weight of the lamp body, the safety factor is higher than counterparts.



High performance modular LED light engine



For easy wiring & installation



3 or 7-pin receptacle with a variety of controls options



Bolt mounting 3G rating